



quilting  
treasures  
IMAGINE & CREATE

# Arabesque Runner

SIZE 60½" x 18½"



Designed by Wendy Sheppard for Quilting Treasures





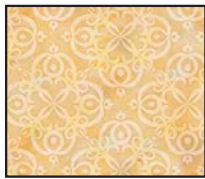
RUNNER FABRIC REQUIREMENTS		
Design	Yardage	12 Kits Bolts
24644 A	1/3	1
24645 Q	1/3	1
24646 E	3/8	1
24646 Q*	2	2
24647 Q	1/4	1
24648 QZ**	1	1
22542 E	7/8	1
Quilt batting, 27" x 68"		
Basic sewing, pressing, and rotary-cutting supplies		
*backing only		
**includes binding		
<i>Note: number of bolts is based on continuous cuts</i>		



24644 A



24645 Q



24646 E



24646 Q  
(backing only)



24647 Q



24648 QZ  
(includes binding)



22542 E

### Designer Notes

- All seams are 1/4" throughout.

### Cutting Directions

**WOF**—a widthwise cut from selvage to selvage; **HST**—half-square triangle; **QST**—quarter-square triangle

*Note: Cut and subcut in order as given. Several subcuts are from the remains of previously cut strips.*

#### 24644 A: Fabric A (gold focal print)

##### Block A

- Cut (1) 2 1/2" x **WOF** strip. Subcut (16) 2 1/2" squares.
- Cut (1) 5 1/4" x **WOF** strip. Subcut (2) 5 1/4" squares. Cut each square once on both diagonals to yield a total of 8 QSTs. Reserve remaining fabric.
- From reserved fabric, subcut (4) 2 7/8" squares.

#### 24645 Q: Fabric B (blue dahlia print)

##### Block B

- Cut (1) 2 7/8" x **WOF** strip. Subcut (8) 2 7/8" squares.
- Cut (1) 5 1/4" x **WOF** strip. Subcut (4) 5 1/4" squares. Cut each square once on both diagonals to yield a total of 16 QSTs. Reserve remaining fabric.
- From reserved fabric, subcut (2) 4 1/2" squares.

#### 24646 E: Fabric C (gold geometric print)

##### Block A

- Cut (1) 4 1/2" x **WOF** strip. Subcut (1) 4 1/2" square.

##### Block B

- Cut (2) 2 1/2" x **WOF** strips. Subcut (32) 2 1/2" squares.

#### 24646 Q: Fabric D (blue geometric print)

##### Backing

- Cut (1) 68" x **WOF** strip. Trim strip to measure 27" x 68".

#### 24647 Q: Fabric E (blue mosaic print)

##### Outer Border

- Cut (1) 3 1/2" x **WOF** strip. Subcut (2) 3 1/2" x 18 1/2" rectangles.

#### 24648 QZ: Fabric F (light blue tonal)

##### Block A & B

- Cut (4) 2 1/2" x **WOF** strips. Subcut (36) 2 1/2" squares and (12) 2 1/2" x 4 1/2" rectangles.



- Cut (1) 5¼" x **WOF** strip. Subcut (3) 5¼" squares. Cut each square once on both diagonals to yield a total of 12 QSTs.

**Inner Border #2**

- Cut (1) 1½" x **WOF** strip. Subcut (2) 1½" x 18½" rectangles.

**Binding**

- Cut (5) 2½" x **WOF** strips.

**22542 E: Fabric G (vanilla tonal)**

**Block A & B**

- Cut (3) 2½" x **WOF** strips. Subcut (24) 2½" x 4½" rectangles.
- Cut (1) 2⅞" x **WOF** strip. Subcut (12) 2⅞" squares.
- Cut (1) 5¼" x **WOF** strip. Subcut (3) 5¼" squares. Cut each square once on both diagonals to yield a total of 12 QSTs.

**Block Sashing**

- Cut (1) 1½" x **WOF** strip. Subcut (2) 1½" x 16½" rectangles.

**Inner Border #1**

- Cut (4) 1½" x **WOF** strips. Sew three strips together (end to end) with 45° seams and subcut (2) 1½" x 52½" rectangles. From remaining strip, subcut (2) 1½" x 16½" rectangles.

**Runner Instructions**

**Block A**

**Block A – Unit 1**

- 1a. *QST Units*. Referring to Diagram 1 and noting orientation of the pieces, sew one 5¼" Fabric G (vanilla tonal) QST to one 5¼" Fabric A (gold focal print) QST for Unit GA. Make a total of four Unit GA.

Diagram 1



- 1b. Referring to Diagram 2 and noting orientation of the pieces, sew one 5¼" Fabric F (light blue tonal) QST to one 5¼" Fabric A (gold focal print) QST for Unit FA. Make a total of four Unit FA.

Diagram 2



- 1c. Referring to Diagram 3, and noting orientation of the units, sew one Unit GA to one Unit FA for one QST Unit. QST Unit should measure 4½" square. Make a total of four QST Units.

Diagram 3



- 2a. *Flying Geese Units*. Referring to Diagram 4, draw a diagonal line on the wrong side of two 2½" Fabric A (gold focal print) squares. With right sides together, align one 2½" square to the left edge of one 2½" x 4½" Fabric F (light blue tonal) rectangle, noting the orientation of the drawn line. Sew on the drawn line. Open and press to reveal the right side of the Fabric A triangle. To reduce bulk, trim the hidden triangle underneath to ¼" from sewn line.

Diagram 4



- 2b. Referring to Diagram 5 and with right sides together, align remaining 2½" Fabric A (gold focal print) square to the right edge of the same 2½" x 4½" Fabric F (light blue tonal) rectangle, noting the orientation of the drawn line. Sew on the drawn line. Open and press to reveal the right side of the Fabric A triangle. To reduce bulk, trim the hidden triangle underneath to ¼" from sewn line. If needed, square up Flying Geese Unit to measure 2½" x 4½". Make a total of four Flying Geese Units.

Diagram 5



3. *Assemble Unit 1*. Referring to Diagram 6 and noting orientation of the pieces, sew one QST Unit to one Flying Geese Unit for one Unit 1. Unit 1 should measure 4½" x 6½". Make a total of four Unit 1.

Diagram 6



**Block A – Unit 2**

4. *HST Units*. Referring to Diagram 7, draw a diagonal line on the wrong side of one 2⅞" Fabric G (vanilla tonal)



tonal) square. With right sides together, align this Fabric G (vanilla tonal) square with one  $2\frac{7}{8}$ " Fabric A (gold focal print) square. Sew  $\frac{1}{4}$ " away from each side of the drawn line. Cut along drawn line to yield 2 HST units. HST Unit should measure  $2\frac{1}{2}$ " square. From four pairs of Fabric GA squares, make a total of eight HST Units.

Diagram 7



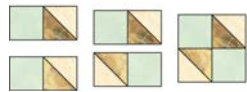
5a. *Four-Patch Units.* Referring to Diagram 8 and noting orientation of the pieces, sew one  $2\frac{1}{2}$ " Fabric F (light blue tonal) square to one HST Unit for one row. Row should measure  $2\frac{1}{2}$ " x  $4\frac{1}{2}$ ". Make a total of eight Four-Patch Rows.

Diagram 8



5b. Referring to Diagram 9 and noting orientation of the rows, sew two Four-Patch rows together for one Four-Patch Unit. Four-Patch Unit should measure  $4\frac{1}{2}$ " square. Make a total of four Four-Patch Units.

Diagram 9



6. *Rectangle Unit A.* Referring to Diagram 10, draw a diagonal line on the wrong side of one  $2\frac{1}{2}$ " Fabric A (gold focal print) square. With right sides together, align one  $2\frac{1}{2}$ " square with the *left* edge of one  $2\frac{1}{2}$ " x  $4\frac{1}{2}$ " Fabric G (vanilla tonal) rectangle, noting the orientation of the drawn line. Sew on the drawn line. Open and press to reveal the right side of the Fabric A triangle. To reduce bulk, trim the hidden triangle underneath to  $\frac{1}{4}$ " from sewn line. Rectangle Unit A should measure  $2\frac{1}{2}$ " x  $4\frac{1}{2}$ ". Make and label a total of four Rectangle Unit A.

Diagram 10



7. *Rectangle Unit B.* Referring to Diagram 11, draw a diagonal line on the wrong side of one  $2\frac{1}{2}$ " Fabric A (gold focal print) square. With right sides together, align one  $2\frac{1}{2}$ " square with the *right* edge of one  $2\frac{1}{2}$ "

x  $4\frac{1}{2}$ " Fabric G (vanilla tonal) rectangle, noting the orientation of the drawn line. Sew on the drawn line. Open and press to reveal the right side of the Fabric A triangle. To reduce bulk, trim the hidden triangle underneath to  $\frac{1}{4}$ " from sewn line. Rectangle Unit B should measure  $2\frac{1}{2}$ " x  $4\frac{1}{2}$ ". Make and label a total of four Rectangle Unit B.

Diagram 11



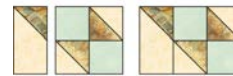
8a. *Assemble Unit 2.* Referring to Diagram 12 and noting orientation of the pieces, sew one  $2\frac{1}{2}$ " Fabric F (light blue tonal) to one Rectangle Unit B for Unit 2 Row 1. Row 1 should measure  $2\frac{1}{2}$ " x  $6\frac{1}{2}$ ". Make a total of four Row 1.

Diagram 12



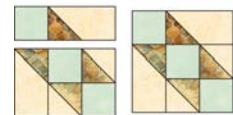
8b. Referring to Diagram 13 and noting orientation of the pieces, sew one Rectangle Unit A to one Four-Patch Unit for Unit 2 Row 2. Row 2 should measure  $6\frac{1}{2}$ " x  $4\frac{1}{2}$ ". Make a total of four Row 2.

Diagram 13



8c. Referring to Diagram 14 and noting orientation of the rows, sew Row 1 and Row 2 together for one Unit 2. Unit 2 should measure  $6\frac{1}{2}$ " square. Make a total of four Unit 2.

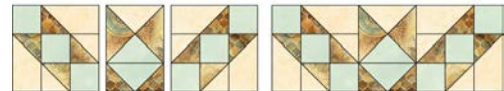
Diagram 14



### Block A – Assembly

9. *Row 1.* Referring to Diagram 15 and noting orientation of the pieces, sew three units together in the following order: Unit 2, Unit 1, Unit 2 for Row 1. Row 1 should measure  $16\frac{1}{2}$ " x  $6\frac{1}{2}$ ". Make a total of two Row 1.

Diagram 15





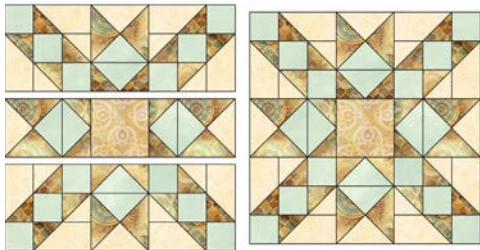
10. *Row 2.* Referring Diagram 16 and noting orientation of the pieces, sew three units together in the following order: Unit 1, one 4½" Fabric C (gold geometric print) square, Unit 1 for Row 2. Row 2 should measure 16½" x 4½". Make a total of one Row 2.

Diagram 16



11. Referring to Diagram 17 and noting orientation of the rows, sew three rows together in the following order: Row 1, Row 2, Row 1 for Block A. Block A should measure 16½" square. Make a total of one Block A.

Diagram 17



### Block B

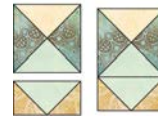
*Note:* Follow construction steps 1–11 for Block B, using the fabric pieces stated below. The number of units constructed will be different in order to make a total of two Block B.

#### Block B – Unit 1

- 12a. *QST Units.* Repeat step 1a using one 5¼" Fabric G (vanilla tonal) QST and one 5¼" Fabric B (blue dahlia print) QST for Unit GB. Make a total of eight Unit GB.
- 12b. Repeat step 1b using one 5¼" Fabric F (light blue tonal) QST and one 5¼" Fabric B (blue dahlia print) QST for Unit FA. Make a total of eight Unit FB.
- 12c. Repeat step 1c using one Unit GB and one Unit FB for one QST Unit. Make a total of eight QST Units.
- 13a. *Flying Geese Units.* Repeat step 2a using one 2½" Fabric C (gold geometric print) square and one 2½" x 4½" Fabric F (light blue tonal) rectangle.
- 13b. Repeat step 2b using one 2½" Fabric C (gold geometric print) square and the same 2½" x 4½" Fabric F (light blue tonal) rectangle. Make a total of eight Flying Geese Units.

14. *Assemble Unit 1.* Repeat step 3. Make a total of eight Unit 1 (see Diagram 18).

Diagram 18



#### Block B – Unit 2

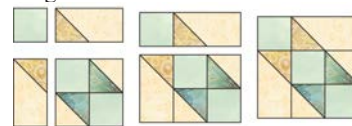
15. *HST Units.* Repeat step 4 using one 2⅞" Fabric G (vanilla tonal) square and one 2⅞" Fabric B (blue dahlia print) square. From eight GB pairs of 2⅞" squares, make a total of sixteen HST Units.
- 16a. *Four-Patch Units.* Repeat step 5a. Make a total of sixteen Four-Patch Rows.
- 16b. Repeat step 5b. Make a total of eight Four-Patch Units.
17. *Rectangle Unit A.* Repeat step 6 using one 2½" Fabric C (gold geometric print) square and one 2½" x 4½" Fabric G (vanilla tonal) rectangle. Make and label a total of eight Rectangle Unit A.
18. *Rectangle Unit B.* Repeat step 7 using one 2½" Fabric C (gold geometric print) square and one 2½" x 4½" Fabric G (vanilla tonal) rectangle. Make and label a total of eight Rectangle Unit B.

- 19a. *Assemble Unit 2.* Repeat step 8a. Make a total of eight Row 1.

- 19b. Repeat step 8b. Make a total of eight Row 2.

- 19c. Repeat step 8c. Make a total of eight Unit 2 (see Diagram 19).

Diagram 19

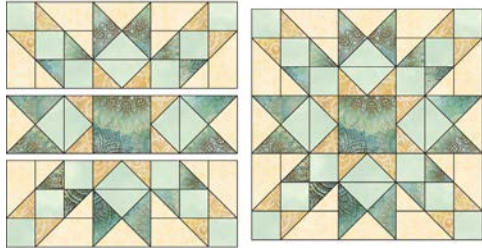


#### Block B – Assembly

20. *Row 1.* Repeat step 9. Make a total of four Row 1.
21. *Row 2.* Repeat step 10 using one 4½" Fabric B (blue dahlia print) square. Make a total of two Row 2.
22. Repeat step 11. Block B should measure 16½" square. Make a total of two Block B (see Diagram 20).



Diagram 20



### Runner Top Assembly

*Note: Refer to the Runner Layout Diagram for the following steps.*

1. *Runner Center.* Sew five pieces together in the following order: Block B, one 1½" x 16½" Fabric G (vanilla tonal) rectangle, Block A, one 1½" x 16½" Fabric G (vanilla tonal) rectangle, Block B for Runner Center. Runner Center should measure 50½" x 16½".
2. *Inner Border #1.* Sew one 1½" x 16½" Fabric G (vanilla tonal) rectangles to each short side of the Runner Center. Sew one 1½" x 52½" Fabric G (vanilla tonal) rectangle to each long side of the Runner Center. Runner Center should measure 52½" x 18½".

3. *Inner Border #2.* Sew one 1½" x 18½" Fabric F (light blue tonal) rectangle to each short side of the Runner Center. Runner Center should measure 54½" x 18½".
4. *Outer Border.* Sew one 3½" x 18½" Fabric E (blue mosaic print) rectangle to each short side of the Runner Center. Runner Top should measure 60½" x 18½".

### Finishing

1. Place the runner top right side up on the top of the batting and the wrong side of the 27" x LOF Fabric D (blue geometric print) rectangle.
2. Baste the layers together and quilt as desired. Trim the backing and batting even with the runner top.
3. Sew the five 2½" x WOF Fabric F (light blue tonal) strips together (end to end) using 45° seams to make a continuous strip. Fold strip in half lengthwise (with wrong sides together) and press. Bind as desired.

*While all possible care has been taken to ensure the accuracy of this pattern, we are not responsible for printing errors or the way in which individual work varies.*

Runner Layout Diagram

